

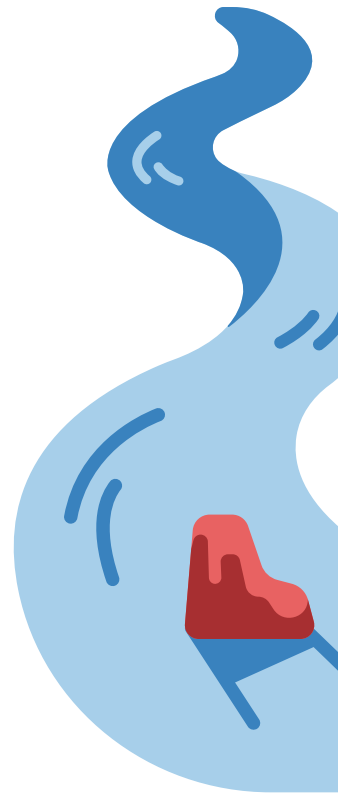
Wiggly Rivers of the River Don

The rain that falls where you live eventually enters the River Don! Lots of smaller rivers join the River Don along its journey to the sea.

How many of these rivers can you find in the wordsearch below?

K	D	E	X	H	E	E	A	B	E	C	K	E	D
O	T	T	T	O	H	N	T	L	L	D	N	T	H
O	G	L	W	N	O	H	R	T	N	R	E	T	O
R	O	N	L	W	E	N	T	R	A	N	W	R	L
B	O	M	I	N	R	R	I	E	X	E	O	E	E
E	R	I	A	T	E	O	D	L	O	V	E	E	A
M	O	E	E	S	T	L	O	X	L	E	Y	A	E
L	T	V	D	I	R	I	I	E	N	M	W	X	R
O	H	O	R	C	O	N	H	O	I	O	N	O	R
H	E	D	O	D	P	E	E	W	L	R	S	N	A
T	R	E	N	O	K	O	F	H	E	E	H	D	A
E	Y	B	E	N	R	E	E	E	V	C	E	A	T
H	R	D	O	E	L	E	A	A	I	E	A	C	R
H	I	P	P	E	R	N	P	O	R	R	F	B	O

DEARNE
DOE LEA
DON
DOVE
DRONE
EA BECK
HIPPER
HOLME
BROOK
LOXLEY
PORTER
RIVELIN
ROTHER
SHEAF
WENT
WHITTING



What sea does the water in the River Don eventually reach?

Answer: the North sea

