



CORPORATE ENRICHMENT DAYS

Working to protect
and restore your
rivers



ABOUT US

The Don Catchment Rivers Trust (DCRT) was established to help protect and restore rivers in the River Don catchment area. This includes all the rivers and streams which flow into the Don - the River Dearne, River Rother, Went and many others.

Our rivers are a valuable asset which tell the story of our culture and heritage. They are important for people, wildlife and the local economy, and form an integral part of our landscape.

We offer bespoke Corporate Enrichment Days to get teams working outdoors for the good of our rivers. By sharing a day with us, your company will contribute to our vision of allowing our rivers to thrive through positive interventions.



WHY PARTNER WITH US

The River Don and all its tributaries are an important part of our local history as well as supporting rich biodiversity. The rivers are under pressure from climate change, pollution, invasive species, human modification, and litter.

By participating in a Corporate Enrichment Day with us, you would be investing in the future of our rivers. We work to support healthy rivers and put them back at the heart of the communities around them. The time and effort you spend with us will reconnect you to the rivers as well as contribute to our vision.



HOW WILL YOUR TEAM BENEFIT?



Team building

- Get your team out of the office
- Boost team morale and productivity
- Allow your team to think creatively and strategically
- Improve wellbeing

Reconnect with your environment

- Experience unique, environmental related activities
- Hands-on conservation work that leaves people feeling proud that they've helped the environment
- Contribute to positive impacts on the local biodiversity and wildlife
- Being climate active and aware
- Indulging in nature for the day

Benefits to your company

- Contributing to your company's Corporate Social Responsibility targets
- A good opportunity to shout about your efforts on social media



Himalayan Balsam Removal

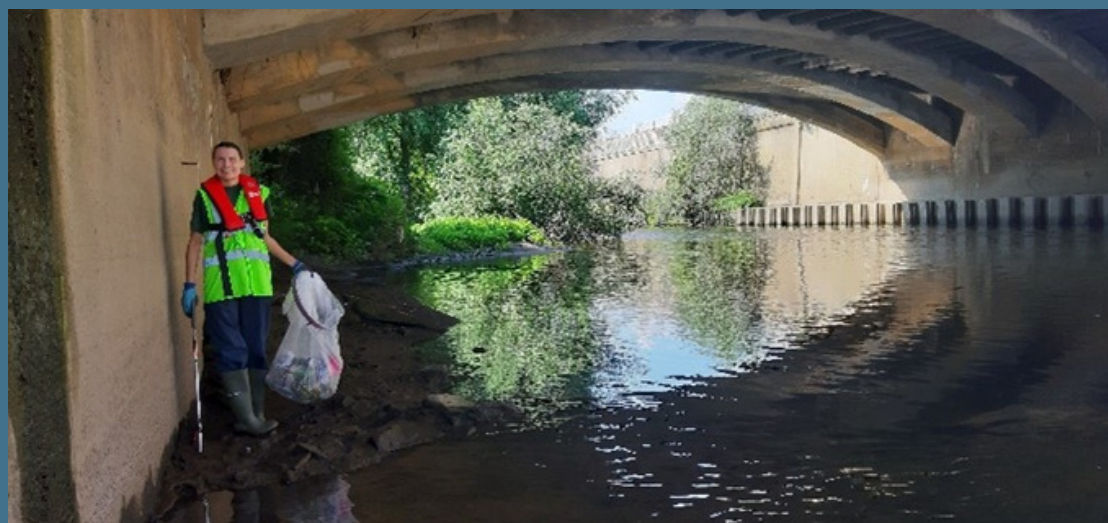
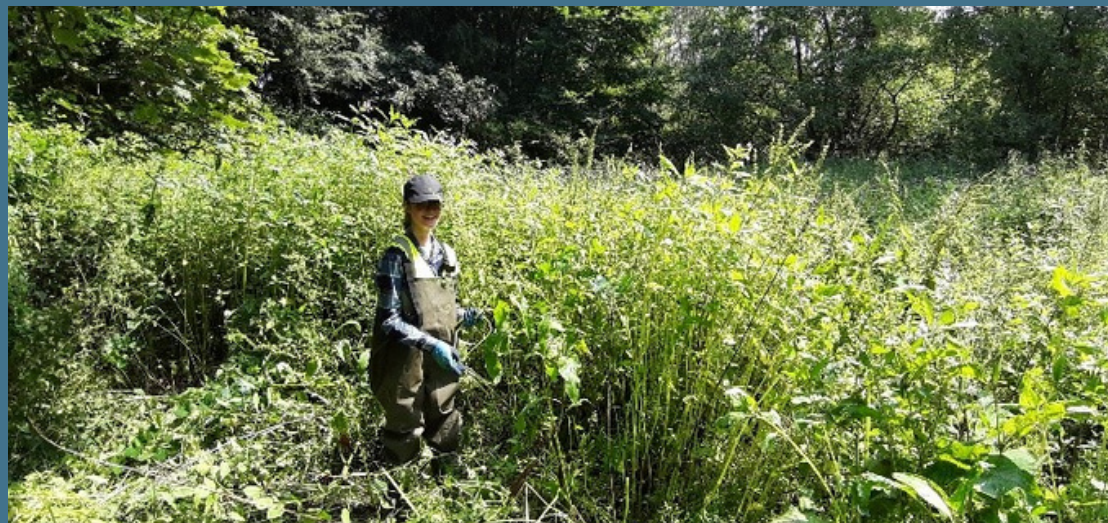
Help us remove invasive species that have escaped into the wild. The plant Himalayan Balsam erodes riverbanks and dominates riversides, out-competing other plants and wildflowers. It can be pulled up, crushed and removed during the months of May-July before it flowers and spreads further.

River Clean Up

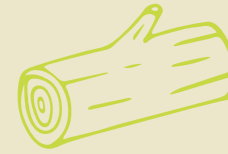


Help to remove large items that have been lost or disposed of in the river. We work together to pull out trollies, tyres, traffic cones and bikes that make their way into the waterways. We also remove litter that has made its way downstream.

EXPERIENCES



EXPERIENCES



Natural Flood Management

Help us 'slow the flow' of water into rivers during high rainfall. We work with natural processes to store excess rainwater, for example we create new wetland areas that soak up rain and build 'leaky-dams' in streams which hold back high water.

Although small in scale, many of these simple measures work together to make a big difference.



Litter Picking

Help make riversides clean and safe for people and wildlife by litter-picking footpaths and public green spaces. We can remove up to 30-50 bags of rubbish per litter-pick which is disposed of or sent for recycling.

INVEST IN YOUR TEAM

As a charity, DCRT need to ensure the costs of delivering a meaningful, enjoyable and a safe activity for your team are covered, Our bespoke events require a lot of careful planning, including obtaining permissions to access the river and securing permits for specific types of work, purchasing materials and to cover time of our experienced staff to deliver the event.

An indicative cost for taking 15 people out to one of our rivers for half a day is £1000 (Don Catchment Rivers Trust is not VAT registered).

Costs cover our expertise in river sites, conditions, and river improvement activities; full risk assessments, health and safety protocols including safe staff/group ratio, public liability insurance cover, permissions to work on the river, waste disposal, all equipment, briefing on why the work is vital to help the environment, refreshments (tea and biscuits) and a fun team day out!



PREPARE FOR THE DAY



Wear outdoor clothes that you don't mind getting muddy



Bring a waterproof in case it rains

Bring water/a cold drink



what to wear and bring



Bring any medication you may need

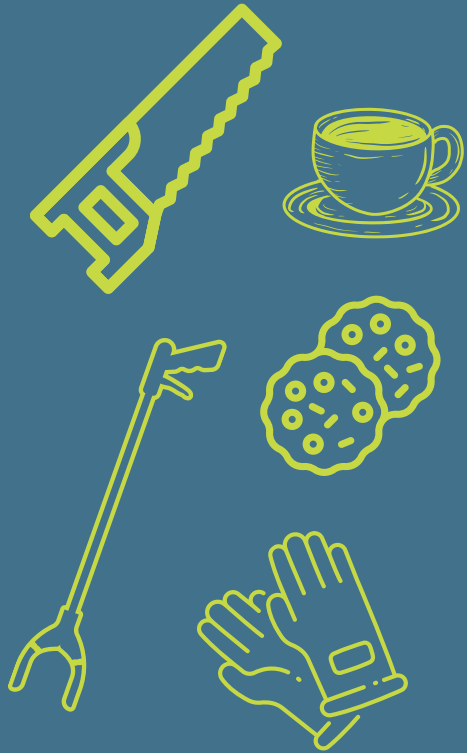
Wear sturdy shoes such as walking boots. This is due to the risk of sharp objects. We can lend steel-toed wellingtons upon request.



Bring packed lunch if you are attending a full day event



PLAN FOR THE DAY



@DonCatchmentRT



@don_catchment_rt



@DonCatchment



101302439081



www.dcr.tg.uk

1. Risk assessment and sign in

Talk through the site specific risk assessment that covers healthy and safety, equipment needed, emergency protocols etc. We ask that you provide an emergency contact detail on the sign in form if you are not already on our database.

2. Tool talk

We conduct an informal tool and equipment talk that covers how to safely use the necessary tools for the day.

3. Equipment and PPE provided

As a minimum, volunteers must wear hi-vis jackets and gardening gloves. Sturdy shoes are preferable but there are wellies available to borrow if you do not have suitable footwear (please state if these are needed beforehand). Life jackets and waders are provided for work in the river channel. Staff are Outdoor First Aid trained.

4. Get stuck in!

Whatever the activity may be, half a day sessions run with a break during which we provide hot drinks and biscuits. Please mention any intolerances and allergies prior to the day if possible. Full day sessions will stop for a longer break over lunch so please bring your own lunch.

5. After the event

We ask that you share your efforts with us on your company website/social media, as will we, so we can celebrate the work we've done together! We will also encourage you to carry out a mini audit in your workplace to see how you are using/conserving your water (more details on the next page).

IS YOUR OFFICE WATER CONSCIOUS?

The time and effort you dedicate to our conservation work on Corporate Enrichment Days is invaluable.

However, it is important to ensure your workplace follows sustainable and environmentally conscious practices, especially surrounding water. After the event, we encourage you to review your environmental policy and let us know how it fares against the points listed to the right.



1

TAPS

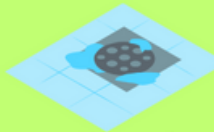
- Are your taps leaking?
- If your taps have user controls such as push tops, what do you think of the run times? Are they on for the right amount of time? Do they need recalibrating?



2

TOILETS

- Are your toilets leaking?
- Are your flushes efficient? Could they be recalibrated to save water?
- Are you ensuring nothing but pee, poo and paper are being flushed? You could put posters up.



3

DRAINS

- Do you know what your drainage system is? Are there separate pipes for your foul water and your surface water? Make a drain plan and make sure people are aware of it.
- Fixing misconceptions can reduce the amount of polluted water entering the surface water system.



4

RAINWATER HARVESTING

- Could you water your office plants with rainwater harvested via water butt? This just needs to intercept the downpipe from your gully before it gets to the drains.



5

CLEANING

- What sort of cleaning products do you use? Some brands send lots of harmful chemicals down the drains which may not be treated before they reenter the water system.



6

KITCHEN

- Do you have a bowl in your kitchen sink to save water?
- Do you ensure no oils/fats are poured down the drains? These can block sewers, reduce their capacity, and cause emergency spills of raw sewage into our rivers to happen more frequently.



7

MAINTAIN COMPANY VEHICLES

- Do you regularly maintain company cars? Oil and other dangerous fluids leaking from them can wind up in the local water system.



8

RUBBISH STORAGE

- How securely is your rubbish stored? Can it be accessed by the public or blown over in high wind events?
- What is the proximity of your rubbish to the river? Could it find its way into the river and pollute the environment?

LOOKING FOR LESS HANDS ON EXPERIENCES?

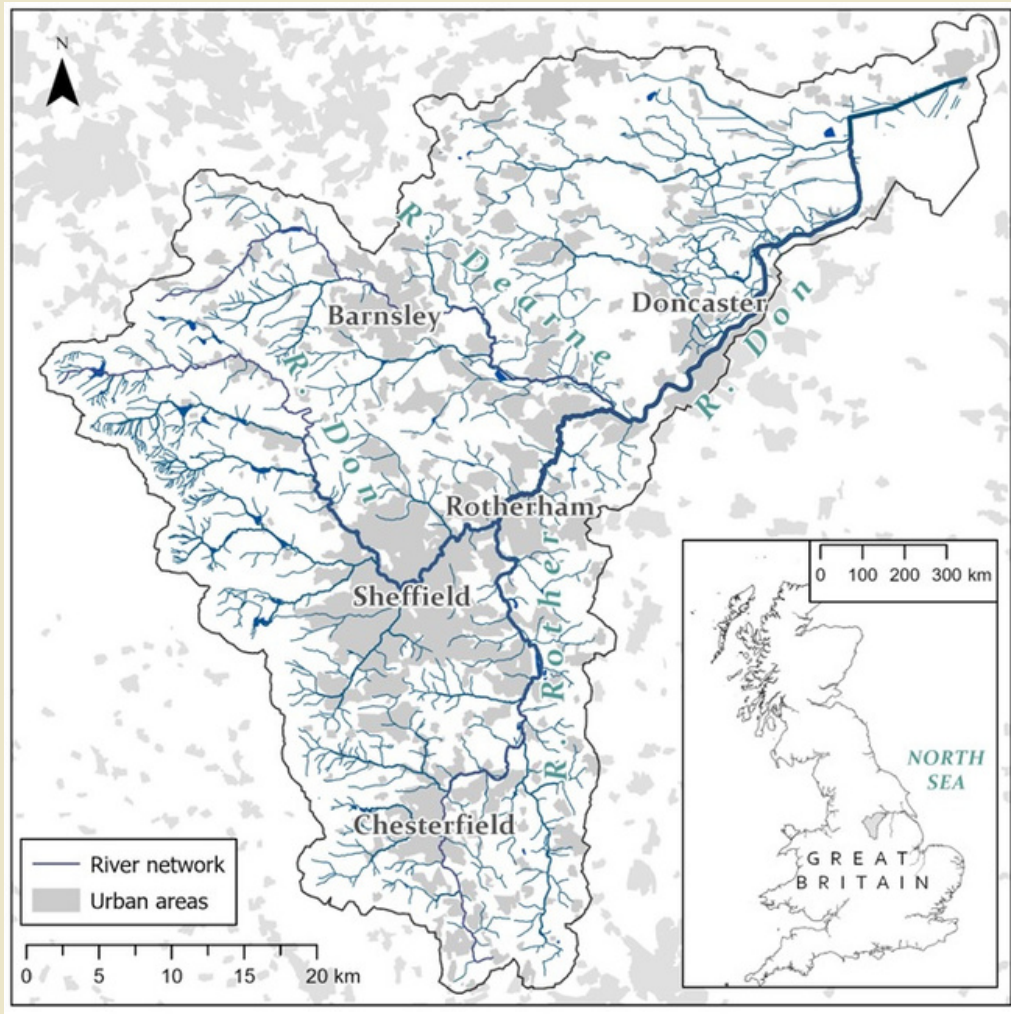
Perhaps hands-on volunteering is not what you're after?

Perhaps your company have expertise they are willing to share with us instead?

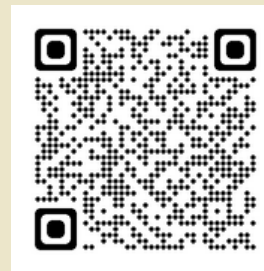
Contact us (volunteer@dcrt.org.uk) to discuss the potential for your employees to volunteer with us in different ways, such as:

- Review planning applications concerning our rivers
- Photography
- Consultancy
- Equipment hire
- Marketing

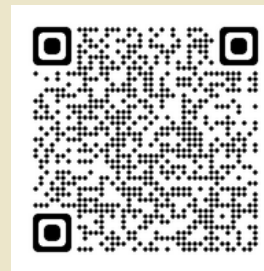




Our catchment extends across the area depicted in this map. Look at the events calendar on our website (or scan the QR code below) to see where we have held past volunteering days.



Events Calendar



Request Form

Please fill in the request form at the bottom of our Corporate Enrichment Day page (or scan the QR code to the right) to start your enquiry. We will aim to respond within a week. Please contact us at least 4 weeks before your preferred date for the volunteer day.

Got a query? We'd be happy to discuss it: volunteer@dcrt.org.uk

LOCATION AND CONTACTS

-  @DonCatchmentRT
-  @don_catchment_rt
-  @DonCatchment
-  101302439081
-  www.dcrt.org.uk